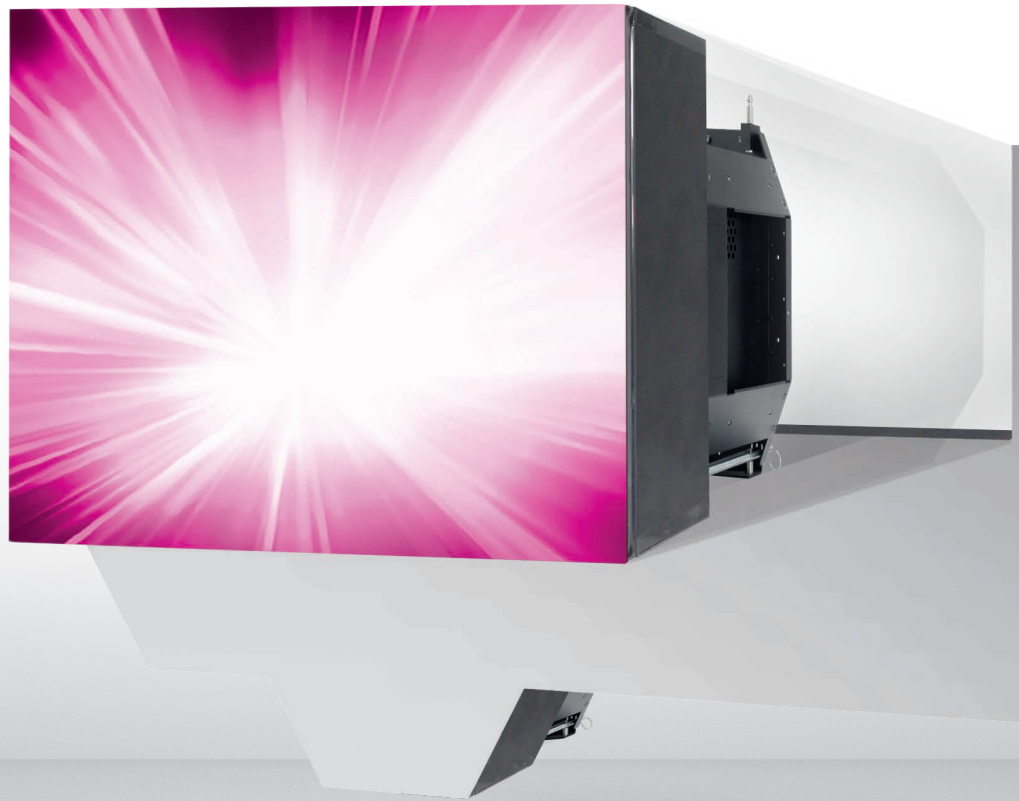




VERSATILE LED-REAR-PROJECTION UNITS  
PERFECT VISUAL SOLUTIONS



) **omniSHAPES**  
EYEVIS MICROLINE

# OUR omniSHAPES SERIES – DEVELOPED FOR DEMANDING APPLICATIONS:

SOLUTIONS FOR PRESENTATION  
& INFORMATION



SOLUTIONS BROADCASTERS

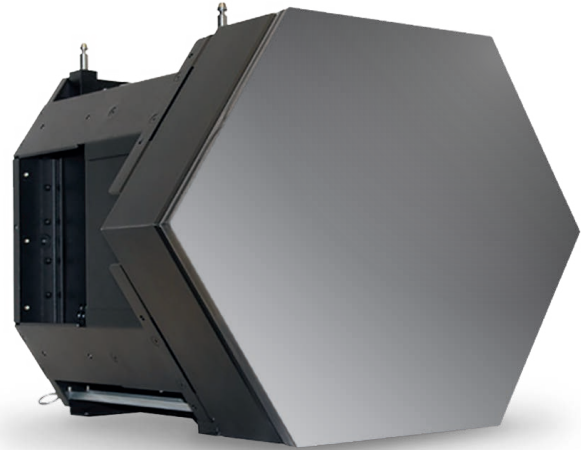


SOLUTIONS FOR VR & SIMULATION



# ) omniSHAPES

EYEVIS MICROLINE



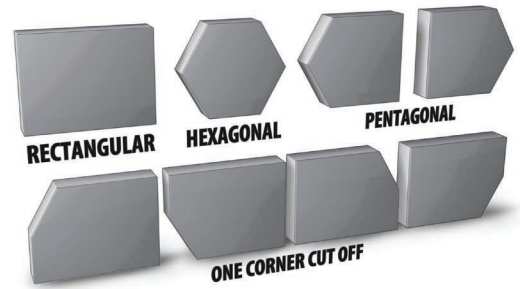
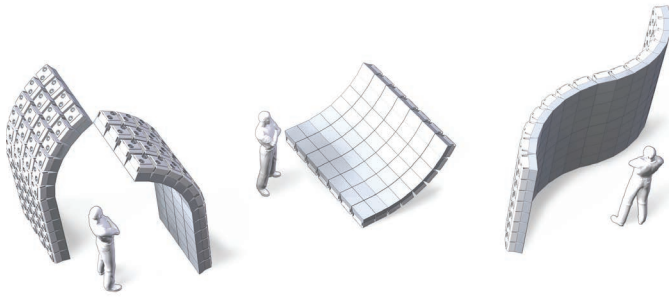
## UNBELIEVABLY FLEXIBLE FOR CREATIVE AND SOPHISTICATED SOLUTIONS

Brilliantly simple, simply brilliant – this is how the flexibly applicable rear projection display modules, with which video wall configurations in different shapes can be realized, presents themselves. In addition to the differently shaped panes, customer specific shapes and assembly components can be implemented.

Even curved arrangements, concave as well as convex, and omniSHAPES floor-displays are possible. Pin sharp images with highest quality and reliability are guaranteed by the utilized DLP technology with LED light source. Simple installation and maintenance are achieved through the flexible and user-friendly building-block-concept consisting of a baseframe, the projector and the pane-unit.

Control and image signals can easily be looped through from module to module, independently from the configuration. The internal signal processing system additionally ensures that every single omniSHAPE presents the right detail, according to their position.

The setup and distribution of sources as well as the adjustment of several other parameters is easily possible through the intuitive eyeDesign software. The latest generation of omniSHAPES is moreover equipped with 120 Hz technology, through which the presentation of three-dimensional contents in combination with active shutter-glasses is possible.



## SOPHISTICATED APPLICATIONS

The versatile omniSHAPES are suitable for any stage design, whatever the size, shape and purpose – they are the main protagonists for the big appearance.

Original and unexpected presentation concepts with perfect performance guarantee a lot of attention. Self-supporting and flying arrangements can be realized without additional material, since the connection between the single Shapes already provides the necessary stability.

Through the funnel-shaped design of the baseframe and the variability of shapes, concave, straight or convex arrangements are possible, setting (almost) no limits to creativity.

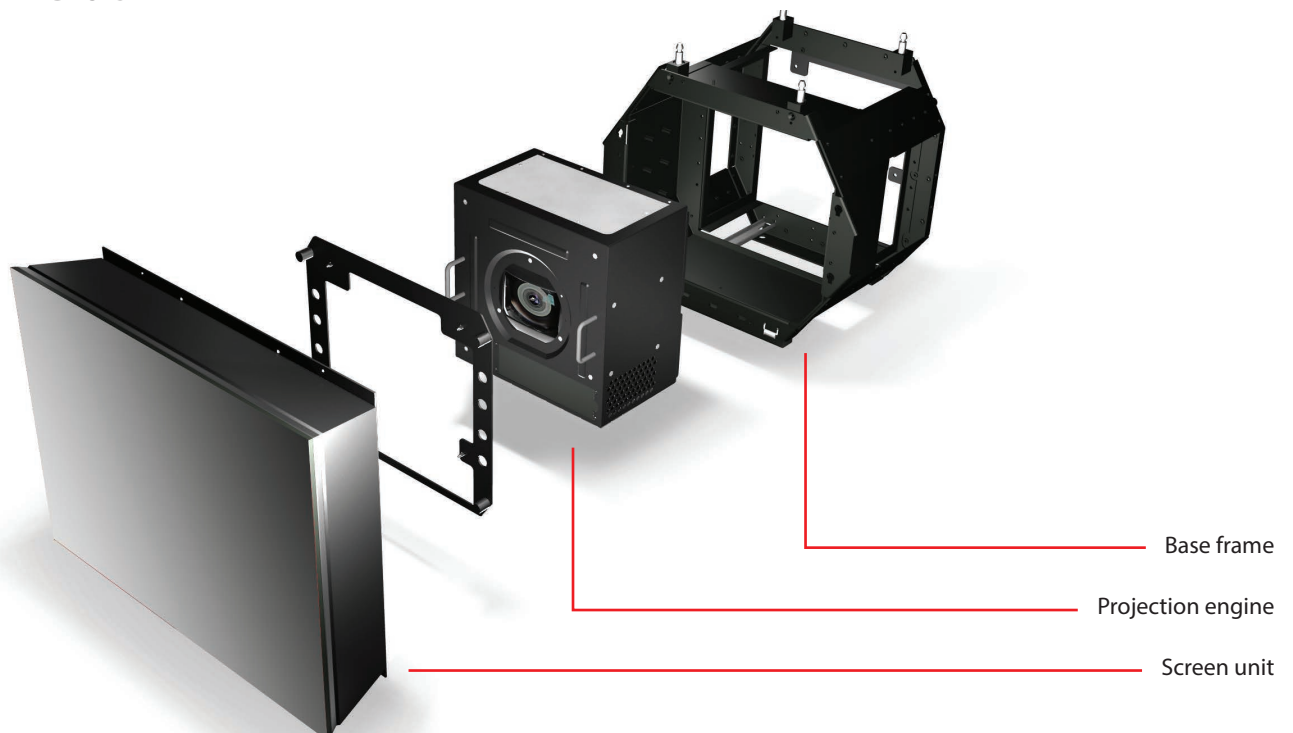
## DIVERSITY WITH HUGE EFFECT

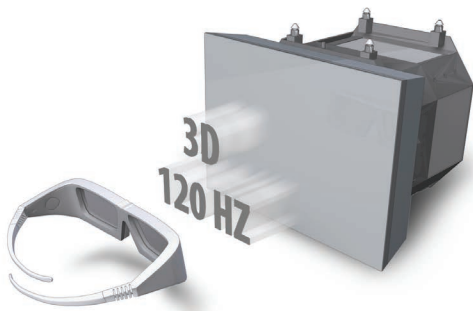
The omniSHAPES are available in different sizes and shapes. Whether in classic 4:3 format, pentagon, hexagon or in other customer-specific shapes.

Through their concept, they are virtually predestined for the assembly of different projection surfaces, sizes and shapes. Even when it comes to unusual solutions like curved or bent walls – with the omniSHAPES almost anything can be realized without any problem.

Through the small dimensions of each display almost any spatial situation can be dealt with – unlimited possibilities with surprising effect that casts a spell over every viewer.

## MODULAR DESIGN





### omniSHAPES GO 3D

The newly implemented 120 Hz-technology in combination with shutter-glasses allows for the presentation of active-stereo-3D-contents in impressive quality and in this way extends the flexibility of the omniSHAPES. Through that, not only pin sharp and shake-free depiction of quickly moving image contents is possible, but stereoscopic contents can also be represented on single omniSHAPES or on combined video wall areas.

The active-stereo-models feature the same variety of shape and flexibility as the other omniSHAPES. The high durability of the LED projection technology and the maintenance-free heat-pipe cooling system provide unusually long service intervals. In the unlikely case of malfunction, the projection unit can individually be disassembled and the defective part can be exchanged in minutes.



### DIGITAL DISPLAY-FLOORS

High resolution and the possibility to assemble the units with almost invisible bezels between the single modules make the omniSHAPES first choice for the installation of walk-on display surfaces. No shadows occur on presented images.

omniSHAPES-floors can be delivered as a whole solution, which means including metal frame for the installation, security glass slabs and, if necessary, stairs and rails.

Interactive display surfaces offer a unique possibility to fascinate museum visitors or customers in sales areas for instance.

The omniSHAPES-floors can be connected to any system, such as touch-control or IR-camera-systems.

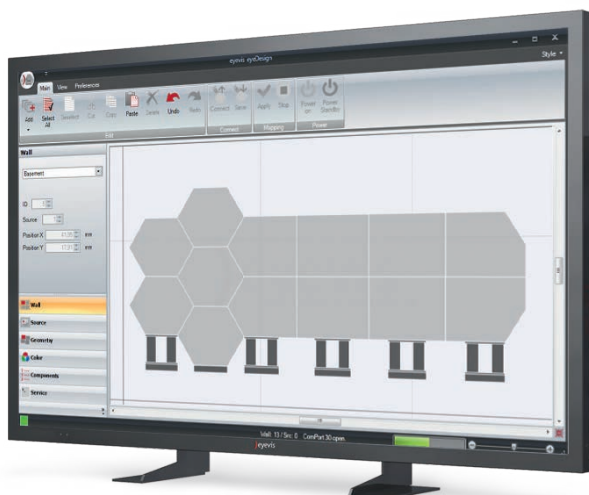
### ALL-ROUNDER eyeDESIGN V3 – INTUITIVE SOFTWARE

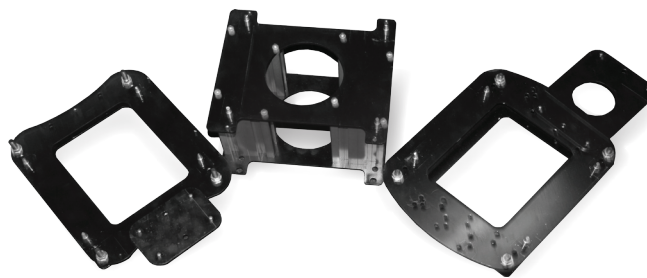
The eyeDesign V3 software is the all-rounder for design, planning, installation and maintenance of creative video wall installations for showrooms and TV studios as well as the events, retail and digital signage sector.

From the first draft to the installation of a display area, eyeDesign V3 is the solution for experts like designers, buying agents and technicians that want to design and install a video wall with eyevis products.

The eyeDesign V3 software allows for simple planning, configuration and maintenance of creative video wall installations. Already in the drafting-phase the software serves as the ideal planning tool.

Due to the CAD-like user interface the video wall installation can be virtually designed with a few mouse-clicks. The software automatically calculates the necessary number of displays and displays a first assembly. Single displays can now be moved and repositioned or even replaced by other types of displays as required.





## UNDERFRAMES AND COMPONENTS PERFECTION FOR ANY ARRANGEMENT

The assembly of video wall arrangements made of omniSHAPES literally has no limits. For a precise, stable and especially safe implementation of different arrangements, eyevis offers a wide range of accessories for the installation.

From underframes and special versions for curved setups, over metal connectors for offset arrangements, setups and special pane shapes, up to special designs of assembly parts for customer-specific special demands, our supply includes everything that is necessary for the smooth implementation of your idea.

With the eyeDesign software an intuitive planning tool is available which, after designing the desired video wall configuration, lists all necessary assembly parts in a table. Moreover, all dimensions needed for further planning can be generated through the software.

### Available standard components:

- Height-adjustable standard underframes for rectangular and pentagonal omniSHAPES
- Height-adjustable standard underframes for hexagonal omniSHAPES
- In-between-underframes for vertically offset arrangements
- Metal connectors for the stabilization of connections between different pane shapes and offset arrangements

From our longtime experience with already realized projects and planning processes we additionally offer you a large number of solutions for special demands.

For the implementation of special solutions beyond standardized assembly parts eyevis, with the know-how of their construction department, will be by your side with word and deed.

## TECHNICAL SPECIFICATIONS

### DISPLAY PROPERTIES

Brightness	typ. 530cd/m <sup>2</sup> @ 6500K (calibrated system with CP Screen) max. 650cd/m <sup>2</sup>
Color Temperature	2800K bis 15000K
Color Space	WWide (120 % NTSC) / Normal (sRGB) / High Brightness
Contrast	typ. 800:1 (static full on/full off)
Resolution	Native: 1280 x 800 pixel, effective screen resolution (rectangular 4:3 SHAPE): 1024 x 768 pixel
Pixel Pitch	0.469 x 0.469 mm
Screen	CP or BB (CrossPrism -> higher brightness, BlackBead -> better viewing angle)
Mullion (gap distance)	typ. 0.8 mm (+0.5 / -0.1) between adjacent omniSHAPES: typical at 25 °C (77 °F) ambient
LED Life-time	≥60,000 hours (time till 50 % brightness)

### ENVIRONMENTAL

Operating Conditions	Temperature: recommended 15 - 25 °C; 5 - 35 °C; for seamless screen 15 - 28 °C Humidity: 0 % - 80 % not condensating
Storing	0 - 50 °C
Thermal Load	approx. 200BTU/h (typical), approx. 270BTU/h (all full brightness)
Noise Level	typ. ≤ 30dBA

### COMMUNICATION

Connection	RS232 or LAN
Loop-through	RS232 loop-through for inter-connectivity
Software	omniSHAPES Designer Software for management and adjustment (offline design also possible)

### INPUT SIGNAL

Type	Single Link DVI-D input and loop-through. Resolution up to 2K (2048 x 1200 @ 60 Hz)
Frame Rate	48Hz to 75Hz (depending on resolution)
Matrix/Tiling	Internal scaling and image mapping. No external controller is needed.

### ELECTRICAL

Power Supply	AC 110V / 220V, 50Hz/60Hz
Power Consumption	58 W (typ., i.e. adjusted system @ 70 % brightness), 80 W (max.; i.e. adjusted system @ full brightness)

### MECHANICAL

Screen Dimensions	Rectangular (4:3): 480 mm x 360 mm (23.6" diagonal)
Required Space	Minimum installation depth 550 mm (entire unit + required space for ventilation)
Weight	12.9 kg (without cable and connection parts)

# AT A GLANCE

## ADVANTAGES OF THE EYEVIS omniSHAPES



### SCREEN OPTIONS

Different rear projection screen types with different characteristics concerning viewing angle and brightness, adjusted to your application.



### LED PROJECTION TECHNOLOGY

The projectors are based on single LEDs for the primary colors red, green and blue. This allows for long-term stable brightness and more vivid colors in comparison to lamp-based projections.



### MODULARLY EXPANDABLE

The user-friendly product design enables the simple expansion of existing installations or the use of single components of the omniSHAPES in other installations.



### SEAMLESS VIDEO WALL ASSEMBLY

The special pane frames allows for a video wall assembly with smallest bezels between contents of the single modules.



### 120 HZ OPTION

The optional 120 Hz-version of the omniSHAPES is perfectly suitable for the shake-free representation of dynamic contents or the three-dimensional depiction in active-stereo-procedure.



### DLP® TECHNOLOGY

The projectors of the omniSHAPES are based on the DLP® technology by Texas Instruments. eyevis are deemed as pioneers in applying this procedure.



### ABSOLUTELY RELIABLE

Highest-quality components, user-friendly design and unlimited orientation for 24/7 application allow for failure-free operation and generous maintenance intervals.



### ENVIRONMENT-FRIENDLY CONCEPT

The LED-illuminants and the heatpipe-based cooling system contain no toxic liquids. Low power consumption positively affects the environmental behavior of the devices.



### OUTSTANDING IMAGE QUALITY

The combination of innovative LED-illuminants and DLP technology provides brilliant colors, impressive black values and in this way image quality in any ambient light condition.



### HIGH DURABILITY

The durability of the LEDs of > 60.000 under normal operational conditions means almost seven years of continuous operation.



### INTERNAL IMAGE PROCESSING

No external image processors or matrix controllers are needed for the omniSHAPES; the necessary processing is already included in every module.



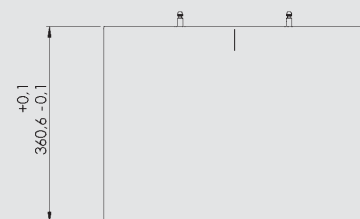
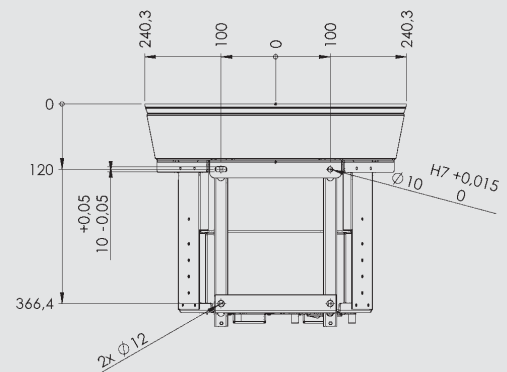
### AUTO COLOR ADJUSTMENT

The integrated Auto-Color-Tracking ensures homogenous representation of color and brightness throughout all modules of a video wall.



### ADDITIONAL FEATURES

Through a wide range of accessories and optional features the omniSHAPES can optimally be adjusted to any application purpose.



Dimensions of the omniSHAPES



## WORLDWIDE SUPPORT WE ARE AT YOUR SERVICE

The high quality of our products is backed up by the outstanding quality of our service technicians and the support we offer to our customers. Apart from regular repairs in-house or on-site, the supply of original spare parts and maintenance works on demand, we offer a range of service level agreements that ensure highest availability of your system.

Our experience shows that preventive maintenance and active support return the investment by leading to optimal system availability, the productivity of the system is guaranteed and operating costs can be reduced. Regular maintenance is a prerequisite for stable, trouble-free operation of your eyevis system. Therefore eyevis offers maintenance contracts that are tailored to the needs of your installation.

Updated information on our projects and products with many photos as well as the possibility of communicating with other interested customers can also be found at:

- [twitter.com/eyevis](https://twitter.com/eyevis)
- [www.facebook.com/eyevis](https://www.facebook.com/eyevis)
- [www.linkedin.com/companies/eyevis](https://www.linkedin.com/companies/eyevis)



Scan the QR code and visit our website to find more detailed information on all of our products and services, download brochures and data sheets, or watch the product videos.

**eyevis GmbH**  
Hundsschleestr. 23  
72766 Reutlingen  
Germany

Tel.: +49 (0) 71 21 - 4 33 03-0  
Fax: +49 (0) 71 21 - 4 33 03-22

Web: [www.eyevis.com](http://www.eyevis.com)  
E-Mail: [info@eyevis.de](mailto:info@eyevis.de)